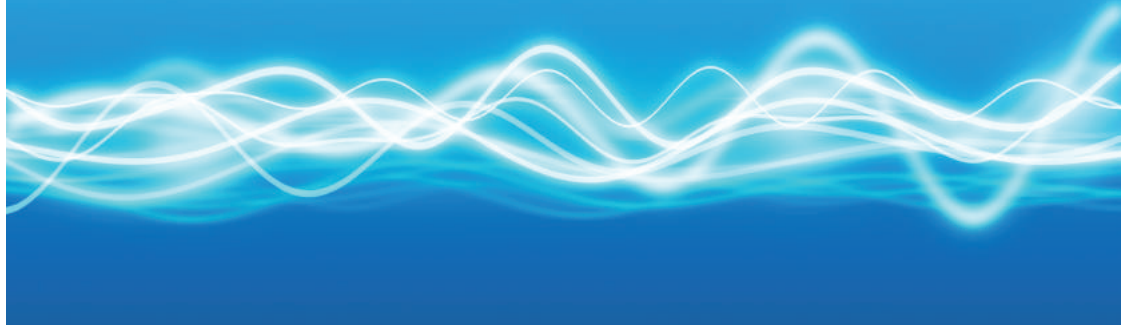




Creating a quieter world



Resilient Layer
 Separating Floors
 Deck Overlay
Acoustic Fencing
 Floating Floor
 Echo Noise Acoustic

CONVERSION
 Airbourne

Acoustic Floorboards
 Noisy Neighbour
Sound deadening
JCW
 ACOUSTIC SUPPLIES
Underlay
Acoustic Insulation
Flats/Apartments
 Soundproofing

Sound Barrier
Dampening
Acoustic Barrier
Sound
 Sound Testing
 Floorboard Overlay
Under screed
 Reverberation
 28m m Refurb Panel

Decibel
 Acoustic deck
 New Build
 Acoustic Insulation



CALL US ON 01204 548400
 or email sales@acoustic-supplies.com

Contents

Floor Soundproofing

JCW 50C Batten	3
JCW 80C Batten	4
JCW 80T Batten	5
JCW 90T Batten	6
JCW Cradle Levelling System	7
JCW Deck 19 Concrete	8
JCW Deck 19 Timber	9
JCW Deck 28/32 Concrete	10
JCW Deck 28/32 Timber	11
JCW Soundboard Premium 21	12
JCW Soundboard Supreme 24	13
JCW Soundboard 28 Plus	14
JCW Barrier Mat	15
JCW Deck 33	16
JCW Deck 37C	17
JCW Deck 34	18
JCW Deck 37	19
JCW Impacta 4551 Concrete	20
JCW Impacta 4551 Timber	21
JCW Impacta Rubber	22
JCW Screedfoam Pack	23
JCW Impactalay 10	24
JCW Impactalay	25
JCW Impactalay Plus	26

Wall Soundproofing

JCW Silentboard	27
JCW Silentboard Plus	28

Ceiling Soundproofing

JCW Noise Blocker Panels	29
JCW Noise Stopper Ceiling Pads	30
JCW Luminaire Covers & Downlighter Covers	31

Multi-Purpose Soundproofing

JCW Quilt	32
JCW RR20 Multi-Purpose Matting	33
JCW Isolations Strips, Acoustic Socket Boxes & Perimeter Edging Strip	34

Absorption

JCW Reflecta Sound & Techmel Foam	35
JCW Gym Panel & Acoustic Baffles	36
JCW Absorber Ceiling Tile	37

Doors

JCW Silentdoor Standard & Silentdoor Premier	38
--	----

Acoustic Fence/Barrier

JCW Reflective Sound Screen	39
JCW Absorbent Sound Screen	39
JCW Sound Traffic Barrier	40

Guide to Products and Installation*

41-44

Disclaimer*

The product and installation information in this publication is to the best of our knowledge correct at the time of printing. We recommend you contact us direct, prior to starting works, for the latest Data Sheet information to enable confirmation of the specification.

Soundproofing and Sound Absorption products for all types of Residential and Commercial Projects

Whatever your acoustic problem, we have a solution. It could be meeting Building Regulations, noisy neighbour problems or simply the need for more peace and quiet, the JCW Acoustic Supplies range is the easy to install, cost effective answer.

The Products

JCW Acoustic Supplies products are suitable for new build, material change of use, refurbishment and home improvement situations.

Our comprehensive range includes:

- Acoustic Floors
- Acoustic Walls
- Acoustic Ceilings
- Acoustic Ancillaries
- Sound Absorption Products
- Acoustic Timber Doors
- Acoustic External Barriers, Fencing and Gates

Acoustic Solutions at a Glance

Please refer to pages 42 to 44 for a simple guide to the JCW Acoustic Supplies range and the products which comply with Robust Detail, Approved Document Part E for England, Wales and Scotland and which products to use for general acoustic improvements and refurbishment. See page 46 for General Guidance to follow when installing our acoustic products.

Help, Advice and Technical Support all the way

We will make it easy for you to get it right first time when you are installing an acoustic solution by JCW Acoustic Supplies.

For larger projects or where needed we can also offer:

- Installation Guides
- Independent Indicative Acoustic Tests and UKAS Accredited Acoustic Tests

For all Sales, Quotes or Technical Advice or to discuss your project and decide which of our acoustic products you will need to achieve the required acoustic improvement or performance, contact our advice line shown below and on each product page.

robustdetails®



Email: sales@acoustic-supplies.com
www.acoustic-supplies.com

For Sales, Marketing and Technical Advice call

01204 548400

Lines Open Monday to Friday 8.00am to 5pm

n55Plus

JCW 50C

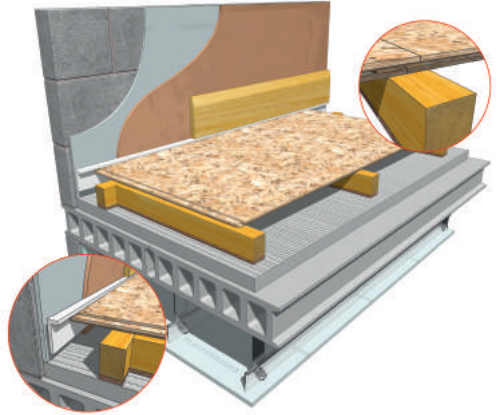
Concrete Floor Batten

Product Details

Suitable for New Build, PCT and Refurbishments

- **Size:**
1800mm x 42mm x 50mm
- **Weight:**
1.9 kgs
- **Robust Detail Performance:**
Impact: $rd\Delta Lw = 28$ dB
- **FFT-3 Floating Floor Types:**
E-FC-1,2,7 and E-FS-1 (screed level varies- refer to Robust Detail Handbook for full specification)

robustdetails®



Product Code:
1474



The mark of responsible forestry



For Sales, Marketing and Technical Advice call
Lines Open Monday to Friday 8.00am to 5pm

01204 548400

JCW 80C

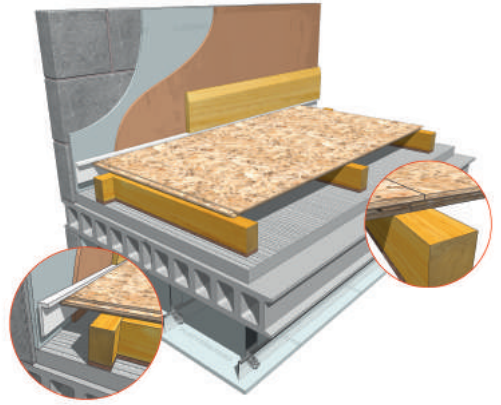
Concrete Floor Batten

Product Details

Suitable for New Build, PCT
and Refurbishments

- **Size:**
1800mm x 42mm x 80mm
- **Weight:**
2.9 kgs
- **Robust Detail Performance:**
Impact: $rd\Delta Lw = 31$ dB
- **FFT-1 Floating Floor Types:**
E-FC-1,2,7, E-FS-1 and E-FS-2
(screed level varies- refer to Robust
Detail Handbook for full specification)

robustdetails®



Product Code:
1470



FSC® C119586
The mark of
responsible forestry



For Sales, Marketing and Technical Advice call
Lines Open Monday to Friday 8.00am to 5pm

01204 548400

NS Plus

JCW 80T

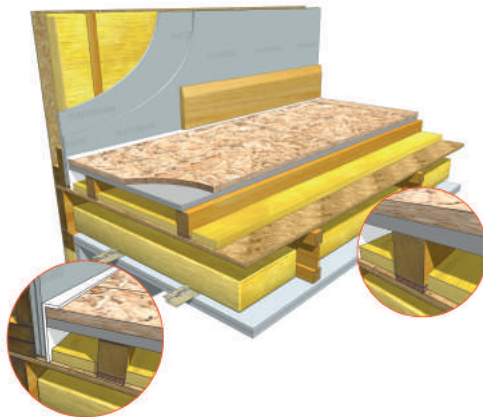
Timber Floor Batten

Product Details

Suitable for New Build, PCT and Refurbishments

- **Size:**
1800mm x 42mm x 80mm
- **Weight:**
2.9 kgs
- **Robust Detail Performance:**
Impact: rd $\Delta Lw = 16$ dB
Airborne: rd $Rw + Ctr 13 = dB$
- **Typical PCT Performance:**
Airbourne; $DnT, w+Ctr = 49dB$
Impact; $L'nT, w = 52dB$
- **FFT-1 Floating Floor Types:**
E-FT-1,2,3 and E-FS-2 (Refer to Robust Detail Handbook for full specification)

robustdetails®



Product Code:
1473



For Sales, Marketing and Technical Advice call
Lines Open Monday to Friday 8.00am to 5pm

01204 548400

JCW 90T

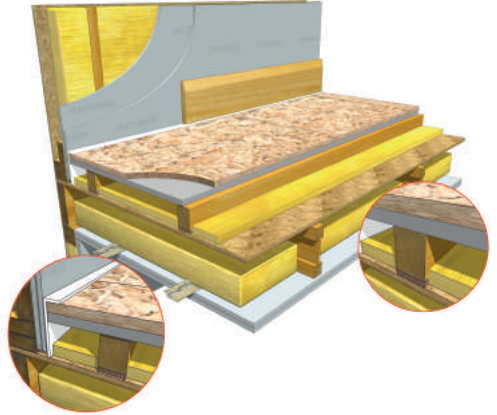
Timber Floor Batten

Product Details

Suitable for New Build, PCT and Refurbishments

- **Size:**
1800mm x 42mm x 90mm
- **Weight:**
2.9 kgs
- **Robust Detail Performance:**
Impact: $rd\Delta Lw = 16$ dB
Airborne: $rd R_w + C_{tr} 13 =$ dB
- **Typical PCT Performance:**
Airbourne; $D_nT, w+C_{tr} = 49$ dB
Impact; $L'nT,w = 52$ dB
- **FFT-1 Floating Floor Types:**
E-FT-7,8 (Refer to Robust Detail Handbook for full specification)

robustdetails®



Product Code:
1492



www.fsc.org

FSC® C119586

The mark of responsible forestry



For Sales, Marketing and Technical Advice call
Lines Open Monday to Friday 8.00am to 5pm

01204 548400

JCW Acoustic Cradle Levelling System

Concrete Floor Cradle and Batten

Product Details

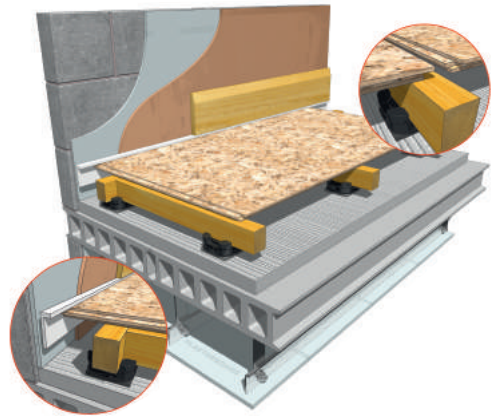
Suitable for New Build, PCT and Refurbishments

robustdetails®

- **Robust Detail Performance:**
Impact: rd Lw = 27 dB
- **FFT-2 Floating Floor Types:**
E-FC-1,2 and E-FS-1 (Beam & Block floor type E-FC-7 floor specification varies- refer to Robust Detail Handbook for full specification)

Product Codes:

Cradle: 1023
Rubber Pad: 1290
Riser: 1026
Packer: 1025



For Sales, Marketing and Technical Advice call
Lines Open Monday to Friday 8.00am to 5pm

01204 548400

nssPlus

JCW Acoustic Deck 19

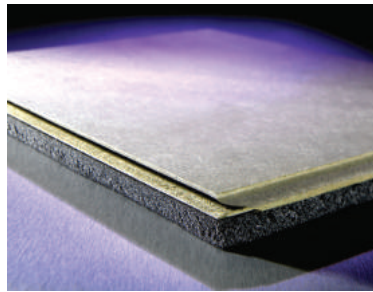
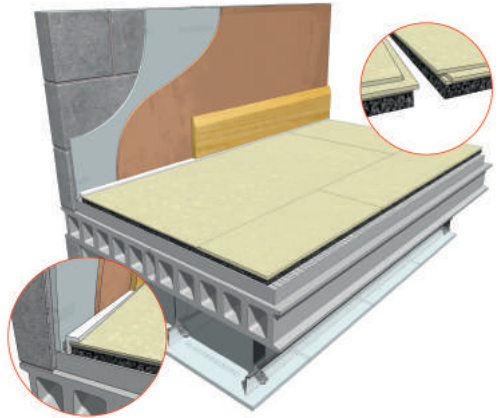
Concrete Floor Overlay Board

Product Details

Suitable for New Build, PCT and Refurbishments

- **Sheet Size:**
1200mm x 600mm x 19mm (0.72m²)
- **Sheet Weight:**
4.7kg
- **Robust Detail Performance:**
Impact: rd Lw = 18 dB
- **FFT-5 Floating Floor Types:**
E-FC-1,2 and E-FS-1 (screed level varies- refer to Robust Detail Handbook for full specification)

robustdetails®



Product Code:
1174



For Sales, Marketing and Technical Advice call
Lines Open Monday to Friday 8.00am to 5pm

01204 548400

JCW Acoustic Deck 19

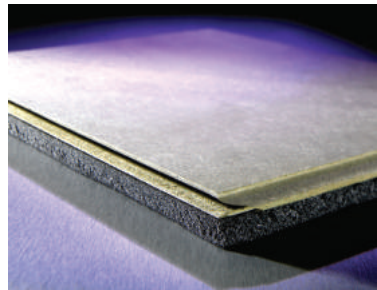
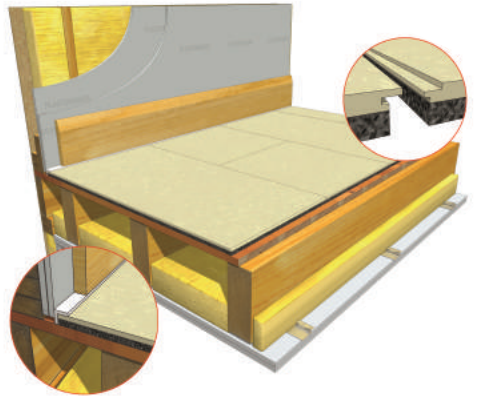
Slimline Overlay Board for Timber Floors

Product Details

Suitable for New Build, PCT and Refurbishments

- **Sheet Size:**
1200mm x 600mm x 19mm (0.72m²)
- **Sheet Weight:**
4.7kg
- **BRE Laboratory Test Data:**
Impact: Ln,w 50 dB
Airborne: Rw 60 dB RW + Ctr 50 dB

Please refer to page 44 for an example of typical build-up



Product Code:
1174



The mark of responsible forestry



For Sales, Marketing and Technical Advice call
Lines Open Monday to Friday 8.00am to 5pm

01204 548400

n55Plus

JCW Acoustic Deck 28/32

Concrete Floor Overlay Board

Product Details

Suitable for New Build, PCT and Refurbishments

- **Roll Sizes:**
Deck 28
2400mm x 600mm x 28mm (1.44m²)
Deck 32
2400mm x 600mm x 32mm (1.44m²)
- **Sheet Weight:**
Deck 28, 18kg
Deck 32, 21kg
- **Robust Detail Performance:**
Impact: rd Lw = 18 dB
- **FFT-5 Floating Floor Types:**
E-FC-1,2 and E-FS-1 (screed layer varies- refer to Robust Detail Handbook for full specification)

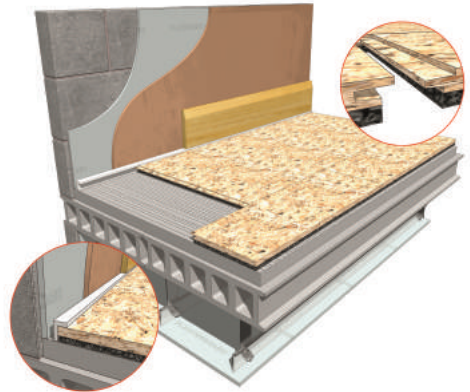
robustdetails[®]

Product Code:
Deck 28, 1071
Deck 32, 1074



www.fsc.org
FSC® C119586

The mark of responsible forestry



For Sales, Marketing and Technical Advice call
Lines Open Monday to Friday 8.00am to 5pm

01204 548400

JCW Acoustic Deck 28/32

Economical Overlay

Product Details

Suitable for New Build, PCT and Refurbishments

- **Sheet Sizes:**

Deck 28
2400mm x 600mm x 28mm (1.44m²)

Deck 32
2400mm x 600mm x 32mm (1.44m²)

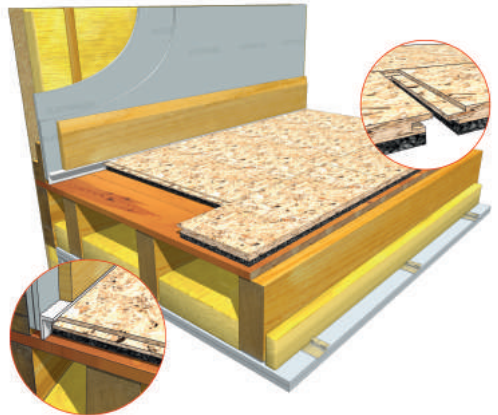
- **Sheet Weight:**

Deck 28, 18kg
Deck 32, 21kg

- **UKAS Laboratory Test Data:**

Impact: 56 dB Ln,w
Airborne: Rw + Ctr 52 = dB

Please refer to page 44 for an example of typical build-up



Product Code:

Deck 28, 1071
Deck 32, 1074



The mark of responsible forestry



For Sales, Marketing and Technical Advice call
Lines Open Monday to Friday 8.00am to 5pm

01204 548400

JCW Acoustic Soundboard Premium 21

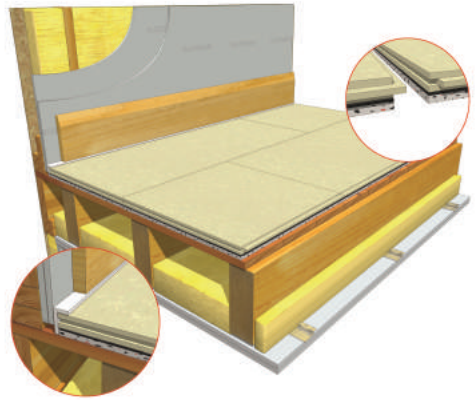
Shallow Overlay Board

Product Details

Suitable for New Build, PCT and Refurbishments

- **Sheet Size:**
1200mm x 600mm x 21mm (0.72m²)
- **Sheet Weight:**
7kg
- **BRE Laboratory Test Data:**
Impact: Ln, w 51 dB
Airborne: Rw - 61 dB Rw + Ctr - 52 dB

Please refer to page 44 for an example of typical build-up



Product Code:
1440



For Sales, Marketing and Technical Advice call
Lines Open Monday to Friday 8.00am to 5pm

01204 548400

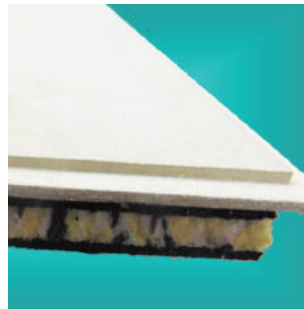
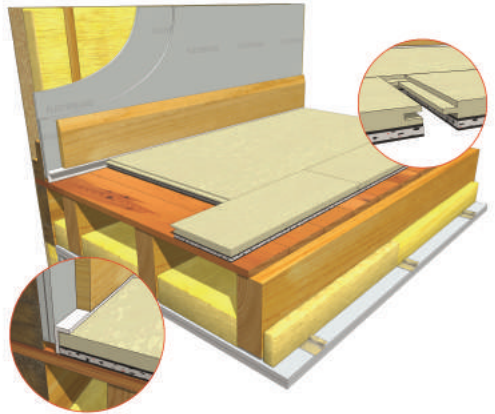
JCW Acoustic Soundboard Supreme 24

Product Details

Suitable for New Build, PCT and Refurbishments

- **Sheet Size:**
1200mm x 600mm x 24mm (0.72m²)
- **Sheet Weight:**
9kg
- **BRE Laboratory Test Data:**
Impact: Ln, w 48 dB
Airborne: Rw - 63 dB Rw + Ctr - 53 dB

Please refer to page 44 for an example of typical build-up



Product Code:
1437



For Sales, Marketing and Technical Advice call
Lines Open Monday to Friday 8.00am to 5pm

01204 548400

JCW Acoustic Soundboard 28 Plus

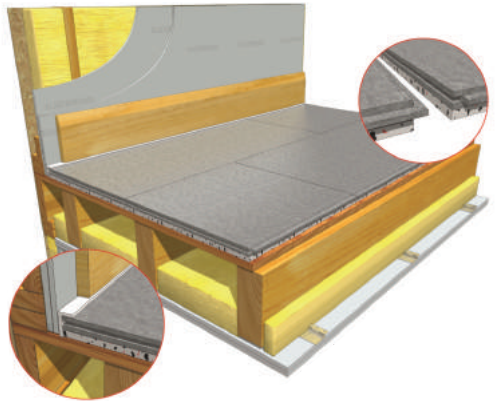
Premium Cement Particle Board

Product Details

Suitable for New Build, PCT and Refurbishments

- **Sheet Size:**
1200mm x 600mm x 28mm (0.72m²)
- **Sheet Weight:**
17.3kg
- **BRE Laboratory Test Data:**
Impact: Ln, w (C1) 50(1) dB
Airborne: Rw (c,ctr) 63(-2,-9) dB

Please refer to page 44 for an example of typical build-up



Product Code:
1289



For Sales, Marketing and Technical Advice call
Lines Open Monday to Friday 8.00am to 5pm

01204 548400

n55Plus

JCW Acoustic Barrier Mat

Multi-Purpose Solution

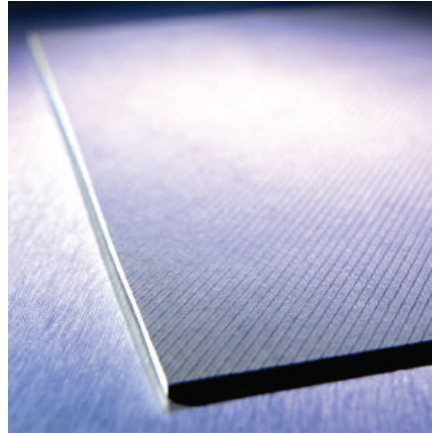
Product Details

Suitable for multi-purpose dense acoustic barrier matting

- **Weight:**
3.0kg/m² (1013)
5.0kg/m² (1014)
7.5kg/m² (1015)
10.0kg/m² (1017)
- **Roll Size:**
1.2mm x 1200mm x 5m (1013)
2mm x 1200mm x 5m (1014)
3mm x 1200mm x 5m (1015)
4mm x 1200mm x 2m (1017)
- **Roll Weight:**
18kg (1013)
30kg (1014)
36kg (1015)
24kg (1017)

Product Code:

1013 (1.2mm)
1014 (2mm)
1015 (3mm)
1017 (4mm)



For Sales, Marketing and Technical Advice call
Lines Open Monday to Friday 8.00am to 5pm

01204 548400

nbsPlus

JCW Acoustic Deck 33

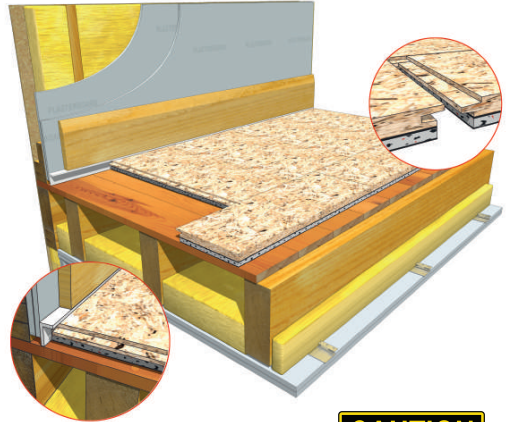
Premium Overlay or Direct to Joist Board

Product Details

Suitable for New Build, PCT and Refurbishments

- **Sheet Size:**
2400mm x 600mm x 33mm (1.44m²)
- **Sheet Weight:**
26.5kg
- **UKAS Laboratory Test Data:**
Impact: 51 dB Ln,w
Airborne: Rw + Ctr 55 dB

Please refer to page 44 for an example of typical build-up



Product Code:
1077



For Sales, Marketing and Technical Advice call
Lines Open Monday to Friday 8.00am to 5pm

01204 548400

JCW Acoustic Deck 37C

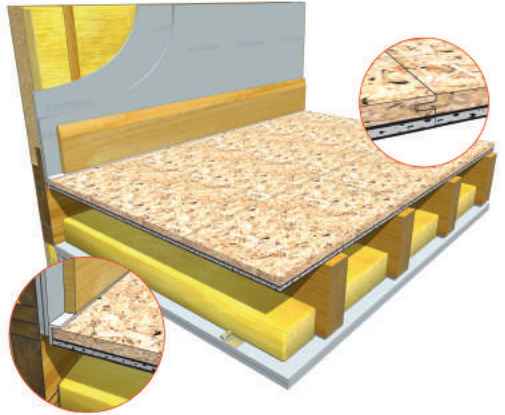
Premium Overlay or
Direct to Joist Board

Product Details

Suitable for PCT
and Refurbishments

- **Sheet Size:**
37mm x 600mm x 2400mm (1.44m²)
- **Sheet Weight:**
31kg
- **UKAS Laboratory Test Data:**
Impact: 52 dB Ln,w
Airborne: Rw + Ctr 55 dB

Please refer to page 44 for an example of
typical build-up



Product Code:
1081



The mark of
responsible forestry



For Sales, Marketing and Technical Advice call
Lines Open Monday to Friday 8.00am to 5pm

01204 548400

JCW Acoustic Deck 34

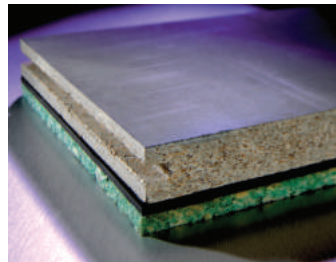
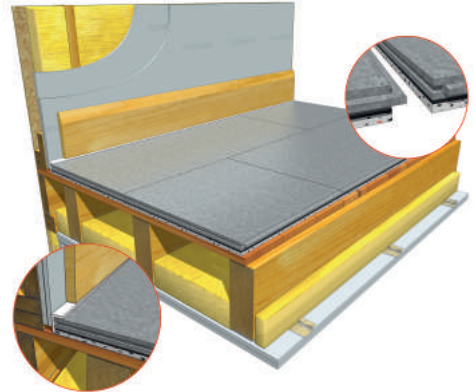
Premium Overlay Board

Product Details

Suitable for New Build, PCT and Refurbishments

- **Sheet Size:**
1200mm x 600mm x 34mm (0.72m²)
- **Sheet Weight:**
24kg
- **UKAS Laboratory Test Data:**
Impact: 53 dB Lnt,w
Airborne: 55 dB Rw + Ctr

Please refer to page 44 for an example of typical build-up



Product Code:
1079



For Sales, Marketing and Technical Advice call
Lines Open Monday to Friday 8.00am to 5pm

01204 548400

n55Plus

JCW Acoustic Deck 37

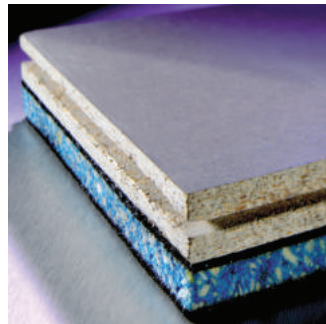
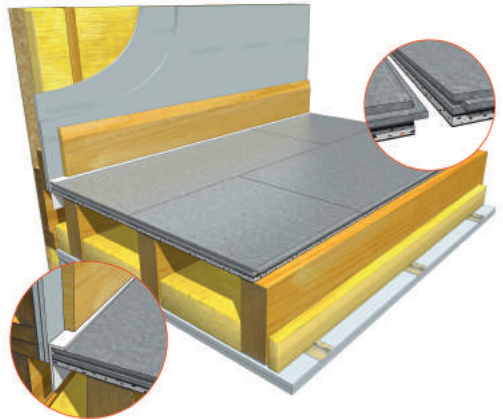
Direct to Joist Board
Premium Overlay

Product Details

Suitable for PCT
and Refurbishments

- **Sheet Size:**
1200mm x 600mm x 37mm (0.72m²)
- **Sheet Weight:**
27kg
- **UKAS Laboratory Test Data:**
Impact: 54 dB Lnt,w
Airborne: 55 dB Rw + Ctr

Please refer to page 44 for an example of
typical build-up



Product Code:
1080



For Sales, Marketing and Technical Advice call
Lines Open Monday to Friday 8.00am to 5pm

01204 548400

n55Plus

JCW Acoustic Impacta Mat 4551

Concrete Floor Soft
Covering Mat

Product Details

Suitable for New Build, PCT
and Refurbishments

● Roll Sizes:

20m x 1050mm x 3.0mm (21.00m²)
10m x 1050mm x 4.5mm (10.50m²)

● Roll Weight:

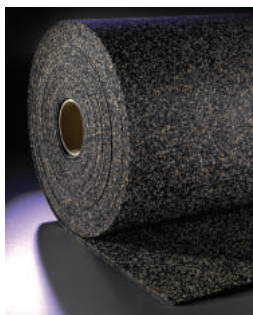
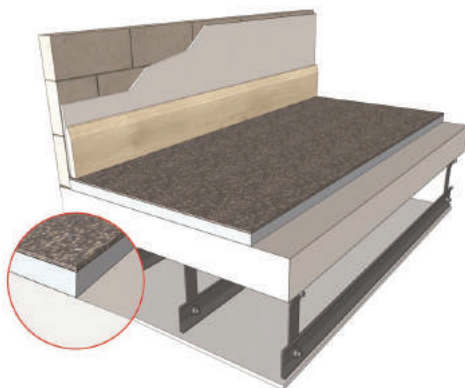
44.5kg (3.0mm)
34.5kg (4.5mm)

● Robust Detail Performance:

Impact: rd Lw = 18 dB (3.0mm)
Impact: rd Lw = 21 dB (4.5mm)

Product Code:

1018 (3.0mm)
1019 (4.5mm)



For Sales, Marketing and Technical Advice call
Lines Open Monday to Friday 8.00am to 5pm

01204 548400

JCW Acoustic Impacta 4551 Timber

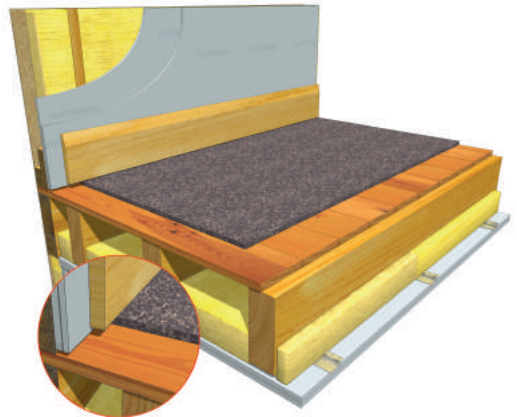
For Timber Floor
Structures

Product Details

Suitable for New Build, PCT
and Refurbishments

- **Roll Size:**
10m x 1050mm x 4.5mm (10.50m²)
- **Roll Weight:**
34.5kg
- **BRE Test Data :**
Impact: Ln,w-60 dB
Airborne: Rw 59dB Rw + Ctr = 48 dB

Please refer to page 44 for an example of
typical build-up



Product Code:
1019



For Sales, Marketing and Technical Advice call
Lines Open Monday to Friday 8.00am to 5pm

01204 548400

n55Plus

JCW Acoustic Impacta Rubber

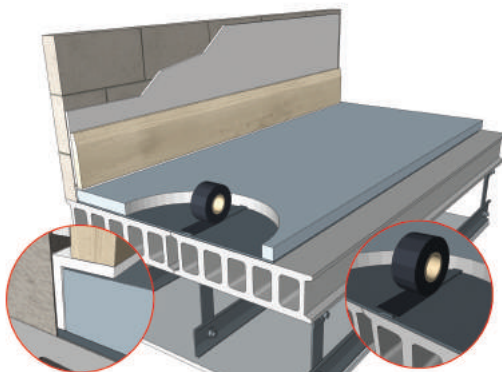
Concrete Floor Under
Screed Resilient Layer

Product Details

Suitable for PCT
and Refurbishments

- **Roll Size:**
10m x 1050mm x 5.0mm (10.5m²)
10m x 1000mm x 10mm (10m²)
- **Roll Weight:**
40.5kg-5mm
76.5kg-10mm
- **Typical Acoustic Performance for 5mm:**
Impact: L'nt, w 54 dB
Airborne: D'nt, w + Ctr 49 dB

Product Code:
1153



For Sales, Marketing and Technical Advice call
Lines Open Monday to Friday 8.00am to 5pm

01204 548400

JCW Acoustic Screed Foam Pack

Concrete Floor Under Screed Resilient Layer

Product Details

Suitable for PCT and Refurbishments

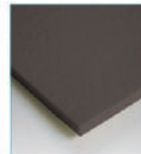
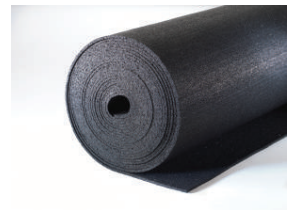
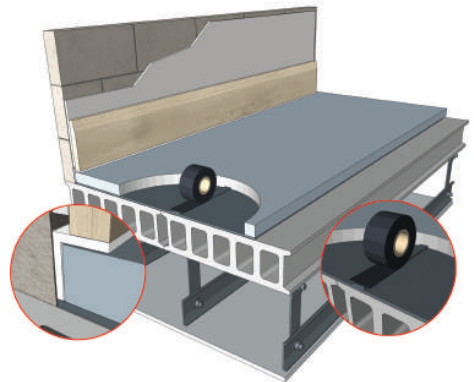
- **Pack Contains:**
JCW Acoustic Edging Strip
150mm x 50Lm x 10mm Foam Strip
Roll Weight 0.4kg

JCW Acoustic Screed Foam
52Lm x 1.2m x 10mm (62.4m per pack)
Floor Coverage 59.8m approx.

JCW Black Cloth Jointing Tape
50Lm x 50mm

- **Pack Weight:**
20kg
- **Typical Acoustic Performance:**
Impact: Lntw = 54 dB
Airborne: DnT, w + Ctr = 54 dB

Product Code:
1207



For Sales, Marketing and Technical Advice call
Lines Open Monday to Friday 8.00am to 5pm

01204 548400

JCW Acoustic Impactalay 10

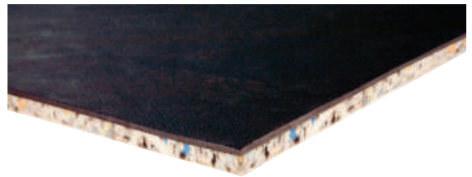
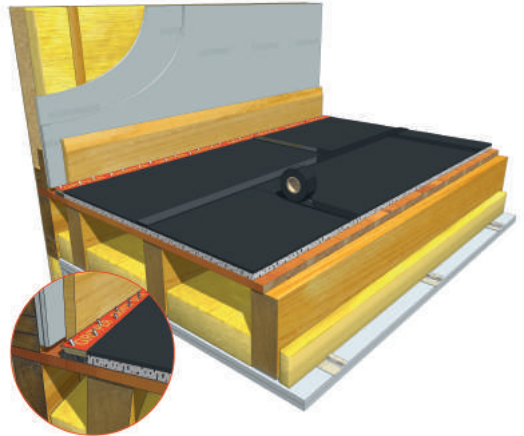
Acoustic Underlay
Flooring System

Product Details

Suitable for PCT
and Refurbishments

- **Sheet Size:**
1200mm x 1000mm x 10mm (1.2m²)
- **Sheet Weight:**
5kg
- **BRE Laboratory Test Data:**
Impact: L_{nw} -43 dB
Airborne: R_w - 58 dB R_w + C_{tr} - 49 dB

Please refer to page 44 for an example of
typical build-up



Product Code:
1519



For Sales, Marketing and Technical Advice call
Lines Open Monday to Friday 8.00am to 5pm

01204 548400

JCW Acoustic Impactalay

Premium Resilient Overlay Matting

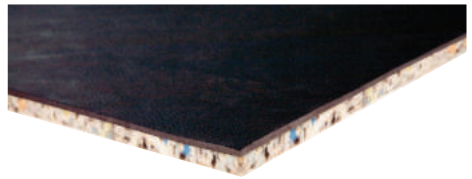
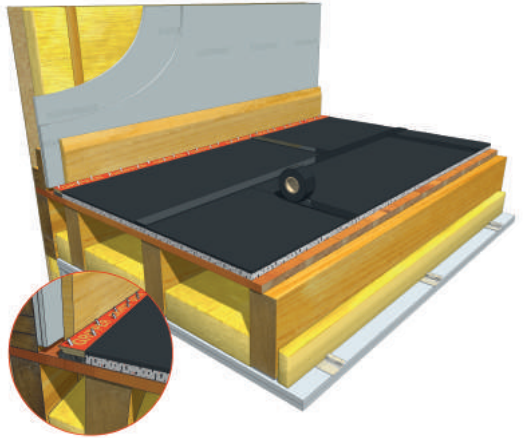
Product Details

Suitable for PCT and Refurbishments

- **Sheet Size:**
1200mm x 1000mm x 12mm (1.2m²)
- **Sheet Weight:**
9.6kg
- **UKAS Laboratory Test Data:**
Impact: 38 dB Ln,w
Airborne: Rw + Ctr 49 dB Rw + Ctr

Please refer to page 44 for an example of typical build-up

Product Code:
1154



For Sales, Marketing and Technical Advice call
Lines Open Monday to Friday 8.00am to 5pm

01204 548400

n55Plus

JCW Acoustic Impactalay Plus

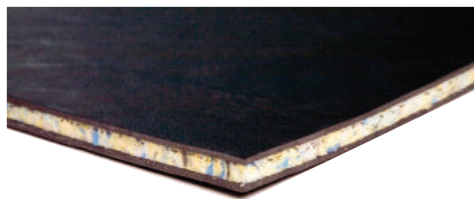
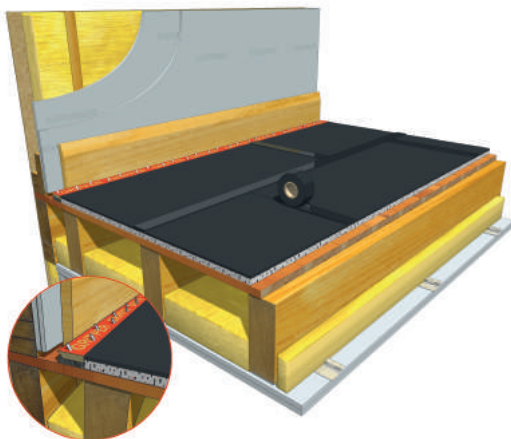
Premium Resilient Overlay Matting

Product Details

Suitable for PCT and Refurbishments

- **Sheet Size:**
1200mm x 600mm x 15mm (0.72m²)
- **Sheet Weight:**
10.80kg
- **UKAS Laboratory Test Data :**
Impact: 39 dB Ln,w
Airborne: Rw + Ctr 51 dB Rw + Ctr

Please refer to page 44 for an example of typical build-up



Product Code:
1155



For Sales, Marketing and Technical Advice call
Lines Open Monday to Friday 8.00am to 5pm

01204 548400

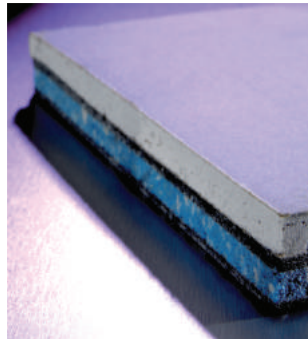
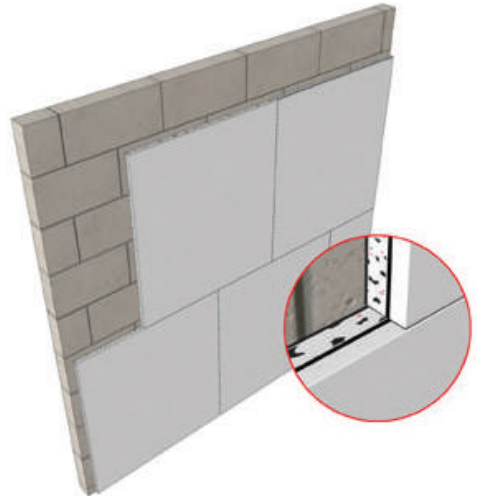
JCW Acoustic Silent Board

Acoustic Wall Liner

Product Details

Suitable for PCT
and Refurbishments

- **Sheet Size:**
1200mm x 1200mm x 27.5mm (1.44m²)
- **Sheet Weight:**
24.7kg
- **Typical Acoustic Performance:**
Airborne: 45 dB Rw + Ctr



Product Code:
1214



For Sales, Marketing and Technical Advice call
Lines Open Monday to Friday 8.00am to 5pm

01204 548400

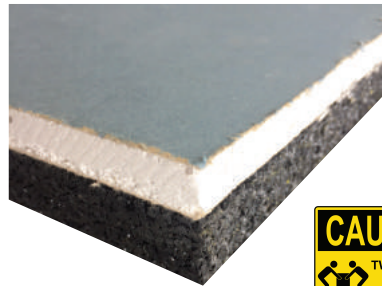
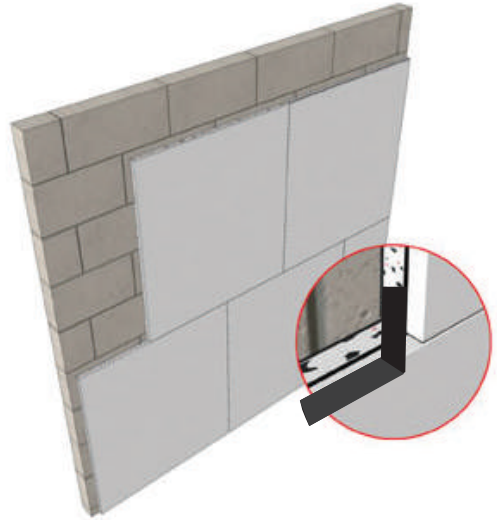
JCW Acoustic Silent Board Plus

Enhanced Acoustic Wall Liner

Product Details

Suitable for PCT and Refurbishments

- **Sheet Size:**
1200mm x 1200mm x 32.5mm (1.44m²)
- **Sheet Weight:**
40.14kg
- **Typical Performance:**
Assists attainment to Part E



Product Code:
1476



For Sales, Marketing and Technical Advice call
Lines Open Monday to Friday 8.00am to 5pm

01204 548400

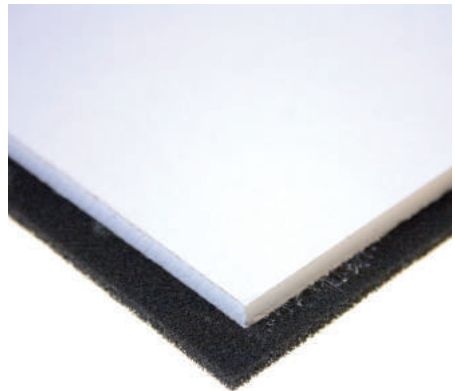
JCW Acoustic Noise Blocker Panels

Suspended Ceiling Insulation

Product Details

Suitable for PCT
and Refurbishments

- **Sheet Size:**
Noise Blocker 16:
595mm x 595mm x 16mm (0.354m²)
Noise Blocker 19:
595mm x 595mm x 19mm (0.354m²)
Noise Blocker 25:
595mm x 595mm x 25mm (0.354m²)
- **Sheet Weight:**
3.5kg (16)
4.5kg (19)
5.5kg (25)
- **Typical Sound Reduction:**
24 dB (16)
26 dB (19)
27 dB (25)



Product Code:

1177 (16)
1179 (19)
1181 (25)



For Sales, Marketing and Technical Advice call
Lines Open Monday to Friday 8.00am to 5pm

01204 548400

JCW Acoustic Noise Stopper Ceiling Pads

Acoustic Ceiling Pads
for Suspended Ceilings

Product Details

Suitable for PCT
and Refurbishments

- **Tile Sizes:**
600mm x 600mm x 50mm
1200mm x 600mm x 50mm
- **Weight Per Pad:**
1.9kg (600mm x 600mm x 50mm)
3.8kg (1200mm x 600mm x 50mm)
- **Operating Temperature:**
-30C to +65C
Thermally stable for temperatures
up to +93C
- **Typical Acoustic Performance:**
14 dB (Mean Average)



Product Code:

1182 (600mm x 600mm x 50mm)
1330 (1200mm x 600mm x 50mm)



For Sales, Marketing and Technical Advice call
Lines Open Monday to Friday 8.00am to 5pm

01204 548400

JCW Acoustic Fire Rated Luminaire Covers

Luminaire Covers Product Details

Suitable for Ceilings

- **Sizes:**

600mm x 600mm (0.36m²)
1200mm x 600mm (0.72m²)

Product Code:

600mm x 600mm (1277)
1200mm x 600mm (1293)

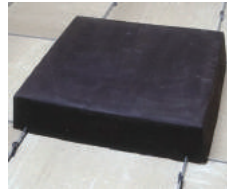
Downlighter Covers Product Details

Suitable for Ceilings

- **Sizes:**

150mm x 150mm - 1087
200mm x 200mm - 1085
250mm x 250mm - 1291
300mm x 170mm - 1292
350mm x 230mm - 1088

Designed to help maintain the fire resistance and acoustic integrity of ceilings. Also ventilated to help reduce heat build up.



JCW Acoustic Downlighter Covers



For Sales, Marketing and Technical Advice call
Lines Open Monday to Friday 8.00am to 5pm

01204 548400

JCW Acoustic Quilt

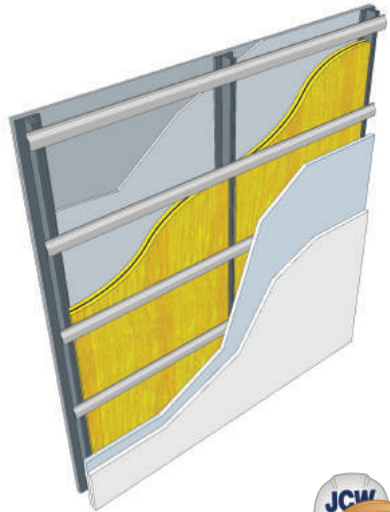
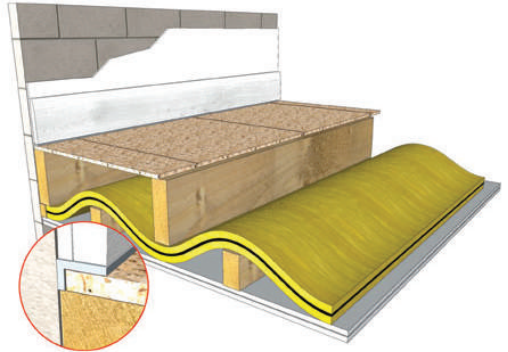
Product Details

Suitable for PCT
and Refurbishments

- **Roll Size:**
5m x 600mm x 52mm (3.00m²)
5m x 1200mm x 52mm (6.00m²)
- **Roll Weight:**
19kg (52mm x 600mm x 5m)
38kg (52mm x 1200mm x 5m)
- **Typical Acoustic Performance:**
Airborne: 54 dB Rw + Ctr

Product Code:

1029 (5m x 600mm x 52mm)
1030 (5m x 1200mm x 52mm)



For Sales, Marketing and Technical Advice call
Lines Open Monday to Friday 8.00am to 5pm

01204 548400

JCW Acoustic RR20 Multi- Purpose Matting

Polyurethane Bound Rubber
Granulate Material

Product Details

For Vibration, Airborne and
Impact Noise Reduction

- **Sheet Size:**
1m x 1m x 20mm (1m²)
- **Weight:**
15.6kg/m²



Product Code:
1247



For Sales, Marketing and Technical Advice call
Lines Open Monday to Friday 8.00am to 5pm

01204 548400

Isolation Strip Product Details

For isolating parts of a structure where any point of contact could compromise its acoustic integrity

- **Roll Sizes**

- 5mm x 50mm x 10m (1161)
- 5mm x 75mm x 10m (1162)
- 5mm x 100mm x 10m (1165)
- 5mm x 150mm x 10m (1166)
- 5mm x 225mm x 10m (1294)
- 5mm x 300mm x 10m (1168)

Socket Box Inserts Product Details

Suitable for both plastic and metal socket boxes

- **Sizes**

- Single x 35mm deep (1224)
- Double x 35mm deep (1223)
- Single x 47mm deep (1226)
- Double x 47mm deep (1225)

Perimeter Edging Strip Product Details

For use with Acoustic Battens, Acoustic Cradles and Acoustic Decks

- **Roll Size**

- 50Lm x 150mm x 5mm (1130)
- 50Lm x 75mm x 5mm (1490)

Product Codes in brackets

JCW Acoustic Isolation Strips



JCW Acoustic Fire & Acoustic Socket Box Inserts



JCW Acoustic Perimeter Edging Strip



For Sales, Marketing and Technical Advice call
Lines Open Monday to Friday 8.00am to 5pm

01204 548400

JCW Acoustic Reflecta Sound

Sound Absorbers

Reflecta Sound Product Details

Wall and ceiling panels to absorb high levels of reverberation noise. Available in a choice of colours



- **Sheet Size:**

Standard and bespoke sizes to a maximum of 3m x 1.2m (3.6m²)

Product Code:

1048

Techmel Foam Product Details

Melamine foam panels to aid speech intelligibility

JCW Acoustic Techmel Foam

Sound Absorbers



- **Sheet Size:**

Standard and bespoke sizes to a maximum of 2.5m x 1.25m (3.125m²)
Options of 25mm and 50mm thickness

Product Code:

1052



For Sales, Marketing and Technical Advice call
Lines Open Monday to Friday 8.00am to 5pm

01204 548400

JCW Acoustic Gym Panel

Sound Absorbers



Product Details

High impact noise resistant wall and ceiling panel

- **Sheet Size:**
Max: 1500mm x 1200mm x 40mm

Product Details

Sound absorbing acoustic hanging baffles (vertical or horizontal). Available in a choice of colours

- **Sheet Size:**
Max: 3m x 1.2m
Thickness (ask for details)

JCW Acoustic Acoustic Baffles

Sound Absorbers



For Sales, Marketing and Technical Advice call
Lines Open Monday to Friday 8.00am to 5pm

01204 548400

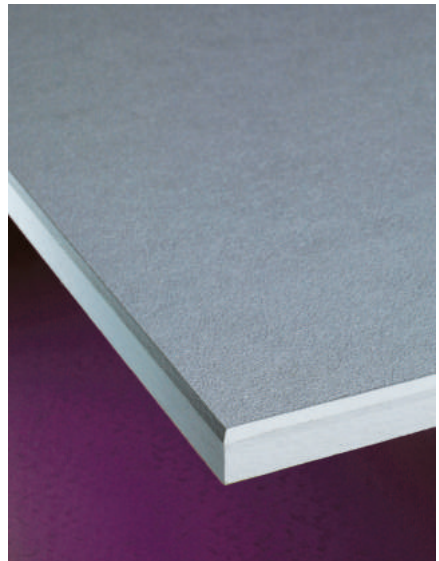
JCW Acoustic Absorber Ceiling Tile

Acoustic Ceiling Tile

Product Details

Glass mineral fibre acoustic core board

- **Tile Size:**
20mm x 600mm x 1200mm
(10 tiles per box -7.2m²)
- **Weight:**
2.5kg/m
- **Acoustic Properties:**
Tested in accordance with
BS EN ISO 354: 2003



Product Code:
1101



For Sales, Marketing and Technical Advice call
Lines Open Monday to Friday 8.00am to 5pm

01204 548400

JCW Acoustic Silent Doors

Acoustic Doors

Product Details

High performance fire rated acoustic timber doors

- **Size:**
Manufactured to size
- **Acoustic Properties:**
Standard Door 35 dB
Premium Door 44 dB



Product Code:
Standard: 1057
Premium: 1060



The mark of responsible forestry



For Sales, Marketing and Technical Advice call
Lines Open Monday to Friday 8.00am to 5pm

01204 548400

JCW Acoustic Reflective Sound Screen

Acoustic Fencing



JCW Acoustic Absorbent Sound Screen

Acoustic Fencing



Product Details

Highly effective sound barrier for residential and commercial use

- **Size:**
To specific requirements to a max height of 6m
- **Category B3**
Sector Scheme 2C

Product Code:
1445



The mark of responsible forestry

Product Details

Enhanced acoustic timber fencing system

- **Size:**
To specific requirements
- **Category A4+B3**
Sector Scheme 4

Product Code:
1446



The mark of responsible forestry



For Sales, Marketing and Technical Advice call
Lines Open Monday to Friday 8.00am to 5pm

01204 548400

JCW Acoustic Sound Traffic Barrier

Acoustic Timber Fencing

Product Details

Acoustic Timber Fencing for demanding highway and commercial applications

- **Height:**
2m to 6m maximum
- **Category B3**
Sector Scheme 4



The mark of responsible forestry



For Sales, Marketing and Technical Advice call
Lines Open Monday to Friday 8.00am to 5pm

01204 548400

Acoustic Requirements

Approved Document E 2003 (England & Wales) Dwelling-Houses and Flats

Performance standards for separating walls, separating floors and stairs that have a separating function between dwellings.

New Build	Airborne Sound Insulation D _{nT,w} + C _{tr} dB (minimum values)	Impact Sound Insulation L _{nT,w} dB (minimum values)
Walls	45	
Floors & Stairs	45	62
Conversions-Material Change of Use		
Walls	43	
Floors & Stairs	43	64

Rooms for Residential Purposes

Performance standards for separating walls, separating floors and stairs that have a separating function between dwellings.

New Build	Airborne Sound Insulation D _{nT,w} + C _{tr} dB (minimum values)	Impact Sound Insulation L _{nT,w} dB (minimum values)
Walls	43	
Floors & Stairs	45	62
Conversions-Material Change of Use		
Walls	43	
Floors & Stairs	43	64

Laboratory Values

For new internal walls and floors between all internal habitable rooms including bathroom/w.c. with a residential property.

Domestic (Non Separating)	Airborne Sound Insulation R _w dB (minimum values)
Walls	40
Floors & Stairs	40

Methods of Compliance

Compliance with Approved Document E can be shown by Pre-Completion Testing or site registration with Robust Details Ltd.

Pre-Completion Testing

Sound insulation testing, to show compliance with the relevant performance standards should be conducted in accordance with:

- BS EN ISO 140-4:1998 (airborne)
- BS EN ISO 140-7:1998 (impact)

Robust Details

The Robust Details Certification Scheme is a simple and reliable route to compliance. It is designed for separating walls and floors in new build dwellings only in England and Wales.

For more information go to: www.robustdetails.com

Section 5 (Scotland) States:

Every building, which is divided into more than one area of different occupation, must be designed and constructed in such a way to limit the transmission of source noise from normal domestic type activities, between such areas, to a level that will not threaten the health of, or cause inconvenience to, the building occupants.

	New Build and Conversions (not including traditional buildings)	Conversion of Traditional Buildings*
Minimum Airborne Sound Insulation	D _{nT,w} 56 dB	D _{nT,w} 53 dB
Maximum Impact Sound Transmission	L _{nT,w} 56 dB	L _{nT,w} 58 dB

*definition of traditional buildings

A building or part of a building of a type constructed before or around 1919: a) using construction techniques that were commonly in use before 1919; and b) with permeable components, in a way that promotes the dissipation of moisture from the building fabric.

Demonstrating Compliance

There are two methods in which to achieve the design performance levels of Standard 5.1.

They are by the use of:

- Example Construction; or
- Other Constructions

Example Constructions

Example Constructions have been developed to repeatedly achieve the required design performance levels, providing that they are all built correctly and all associated flanking details are correctly designed. They are examples of constructions, commonly used within the UK, that are proven to reduce sound transmission at frequencies which can generate neighbour complaints.

Other Constructions

Other Constructions include manufacturers' proprietary solutions and new, or innovative, construction designs, which are not considered to be Example Constructions.

Acoustic Solutions at a Glance

Method of Compliance-PCT/PT Approved Document E

Timber and Concrete Floors	New Build PCT req'd	Conversion PCT req'd	Refurbishment	Residential	Floor Type (Refer to brochure for construction details)
Acoustic Batten JCW 80T timber frame (bespoke batten depths available made to order)	■	■	■		Timber PCT/PT or General Refurbishment
Acoustic Batten JCW 50C & JCW 80C. See Robust Details for further options	■	■	■		Concrete PCT/PT or General Refurbishment
Cradle & Batten See Robust Details for further options	■	■	■		Concrete PCT/PT or General Refurbishment
Impacta Rubber Under Screed Rubber Layer	■				Concrete PCT/PT
Acoustic Screed Foam Pack Under Screed Foam Layer	■				Concrete PCT/PT
Impacta Mat 3mm Surface Impact Layer	■	■	■	■	Concrete Refurbishment
Impacta Mat 4.5mm Surface Impact Layer	■	■	■	■	Concrete PCT/PT Refurbishment
Deck 19 T&G Overlay	■	■	■	■	Timber or Concrete General Refurbishment
Acoustic Deck 28 & 32 Overlay	■	■	■		PCT/PT Timber or General Refurbishment
Deck 33 & Deck 37C Direct to joist option	■	■	■		PCT/PT Timber or General Refurbishment
Deck 37 Cement Board Direct to joist option	■	■	■		PCT/PT Timber or General Refurbishment
Impactlay 12mm Surface Mat treatment		■	■	■	Concrete or General Refurbishment
Impactlay Plus 15mm Surface Mat treatment		■	■	■	PCT/PT or General Refurbishment

Walls			Product	Wall Type
Timber Single Stud Solution		■	Acoustic Quilt	PCT/PT
Timber Double Stud Solution	■		Acoustic Quilt	PCT/PT
Metal Single Frame Solution		■	Acoustic Quilt	PCT/PT
Metal Twin Frame Solution	■		Acoustic Quilt	PCT/PT
Independent Wall Lining Solution		■	Acoustic Quilt	PCT/PT
Acoustic Liner Solution		■	Acoustic Silent Board	PCT/PT

robustdetails®

Method of Compliance- Robust Detail (New Build Dwellings only)

Product Range	Robust Detail	Floor Type
Batten JCW 50C (FFT 3)	■	E-FC-1,2,7 E-FS-1
Batten JCW 80C (FFT 1)	■	E-FC-1,2,7 E-FS-1 E-FS-2
Batten JCW 80T (FFT 1)	■	E-FT-1,2,3
Batten JCW 90T (FFT 1)	■	E-FT-7,8
Cradle & Batten (FFT 2)	■	E-FC-1, E-FC-2, E-FC-7, E-FS-1
Deck 19 (FFT 5)	■	E-FC-1, 2 E-FS-1
Deck 28 & 32 (FFT 5)	■	E-FC-1, 2 E-FS-1
Impacta Mat (4.5mm) Bonded Resilient Floor Cover	■	E-FC-8

These products have been independently tested in a UKAS accredited laboratory and meet or exceed the minimum performance criteria as stipulated in the Robust Details Handbook.

Please refer to the Robust Details Handbook for the details of the required specification.

Key to Method of Compliance

PCT- Pre-Completion Testing (England & Wales)
PT- Performance Testing (Scotland)
FFT- Floating Floor Treatment

Installation Guidance

General Guidance when installing Acoustic Floating Floor Products

The building should be watertight, with all major works completed including plastering, plumbing etc. prior to the installation of the acoustic floating floor.

Floating acoustic flooring is always best installed towards the end of the project. This reduces the possibility of high moisture levels leading to expansion and contraction or general damage due to high floor loadings and on-going construction works.

A brief installation guide for decking products is shown below. Full PDF installation are available for most products including Acoustic Battens, Cradles & Impactlay matting by calling

General Installation of Acoustic Decking

All acoustic flooring must be isolated from the perimeter walls using either 5mm foam Perimeter Edging or L Shaped Strip. Lay the acoustic boards in a staggered (brick bond) pattern and adhesive bond all joints. Cut and scribe the boards to butt up to the foam Perimeter Edging Strip using Acoustic Sealant to fill any minor gaps. Skirting boards must also be isolated from the acoustic floor surface; either maintain a clear 5mm gap or sandwich the excess foam Perimeter Edging Strip between the acoustic floor and skirting board.

To avoid sound transference and maintain isolation between rooms, the acoustic flooring should not be continuous. At doorways, leave a 5mm gap between adjoining boards and butt seal the boards together against a 10mm bead of Acoustic Sealant.

To ensure that the acoustic floor installation is fully effective, extreme care should be taken to correctly detail and isolate the junctions between separating floors, walls and ceilings. If junctions are incorrectly detailed, the acoustic performance will be limited and the required improvements may not be achieved. The Laboratory Test Result indicated on the product data sheet is based on the structure shown. Penetrations through or within the separating elements (i.e. steels, downlighters, pipes, sockets etc.) will likely reduce the acoustic performance of any system. Please contact our Technical Helpline for further information.

General Installation guidance for all other products is available on individual Data Sheets.

Direct to Joist Applications

Where height is a major issue we suggest temporary decking be employed during the main building works. Direct to joist products can also be laid onto existing flat floorboards or decking. Acoustic boards should always be conditioned prior to installation.

Decking Products and Joist Centres

The following JCW Acoustic Decking products have been tested and are suitable for direct-to-flat joist application as indicated below:

JCW Product	Up to 400mm Joist Centres	Up to 600mm Joist Centres
Deck 28*	■	
Deck 32*	■	■
Deck 33	■	
Deck 37	■	■
Deck 37C	■	■

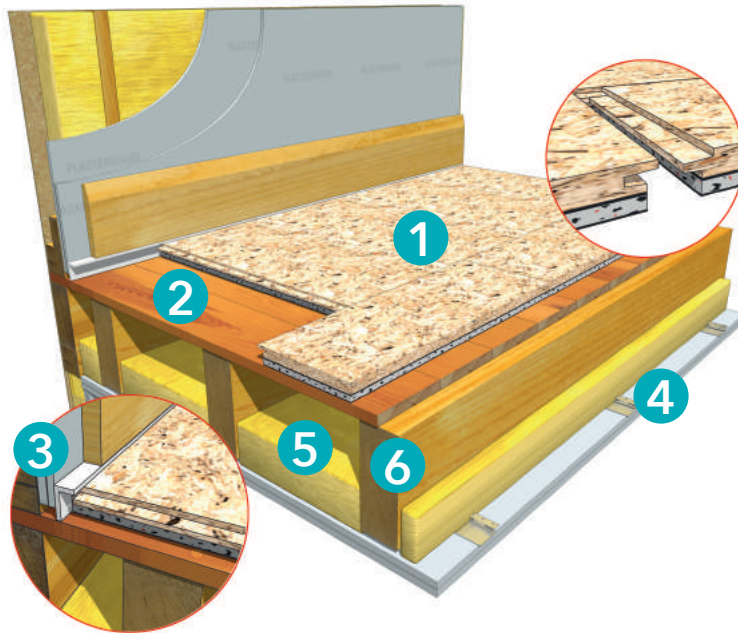
*To be used alongside JCW Isolation Strip

General Rules for Laying Decking (Direct to Joist)

18mm chipboard and 22mm chipboard surfaces suit a maximum 400mm joist width.

22mm chipboard surface suits a maximum joist width of 600mm.

Example of typical materials used in floor build up



- 1 JCW Soundproofing Product
- 2 Existing Subfloor
- 3 JCW L Shaped or Flat Perimeter Edging
- 4 Resilient Bars and 2 Layers x 15mm Acoustic Plasterboard
- 5 100mm x 45kg/m³ Mineral Wool Slab
- 6 225mm Depth Timber Joists

Disclaimer

The product and installation guidance we offer is, to the best of our knowledge, correct. Please contact us direct, prior to starting works, for the latest information to enable confirmation of the specification.



For Sales, Marketing and Technical Advice call
Lines Open Monday to Friday 8.00am to 5pm

01204 548400

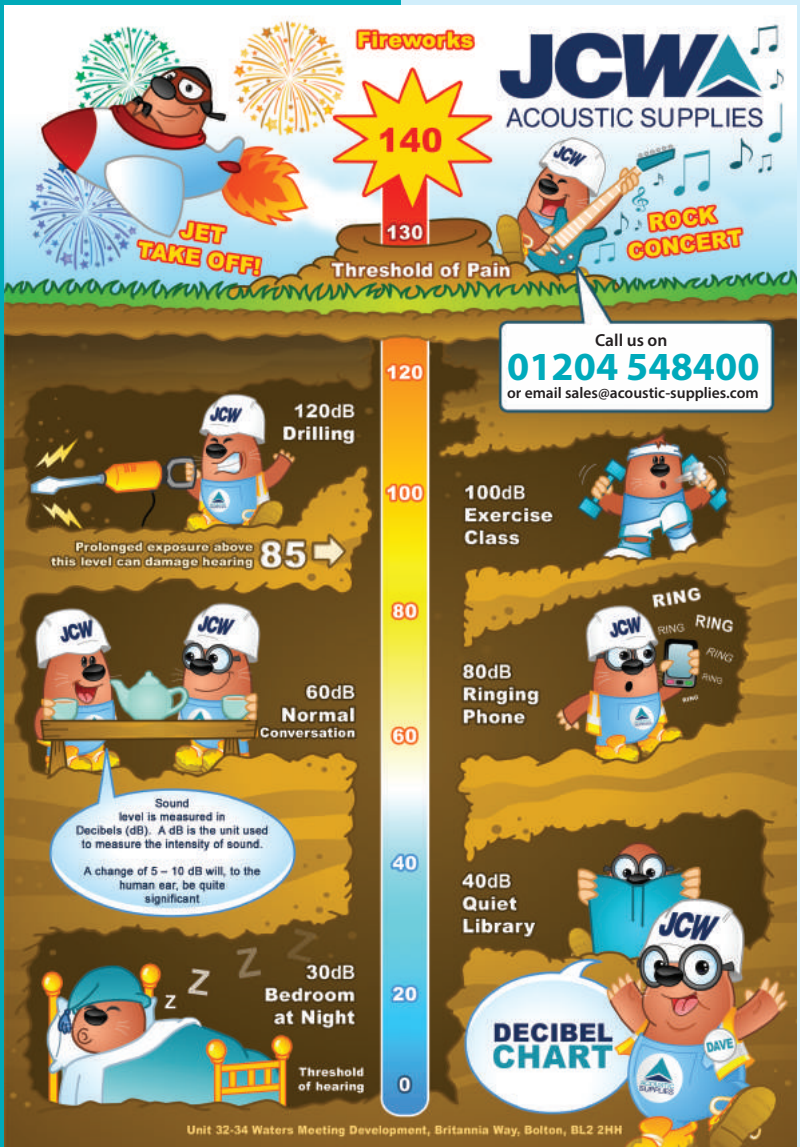


Notes



For Sales, Marketing and Technical Advice call
Lines Open Monday to Friday 8.00am to 5pm

01204 548400



Head Office
Unit 32-34,
Waters Meeting Development
Britannia Way, Bolton BL2 2HH
Telephone: 01204 548400
Facsimile: 01204 366960
Email: sales@acoustic-supplies.com
www.acoustic-supplies.com

Follow us on:



JCWA
ACOUSTIC SUPPLIES